

THE BOATHOUSE

Great food, waterfront dining, and dreamboats on scenic Lake Buena Vista

Established April 2015



OVERVIEW

Buyouts Allowed? Yes

Semi-Private Dining Rooms Available: The Lounge - Seated Capacity: 25-38 (High-top tables), Reception Capacity: 40; Sunset Patio - Seated Capacity: 10-25, Reception Capacity: 30
Private Dining Rooms Available: Trophy Room - Seated Capacity: 42-50, Reception Capacity: 60; Trophy & Regatta Rooms - Seated Capacity: 100, Reception Capacity: 120; The Private Patio (can also be booked with Trophy & Regatta Rooms - Seated Capacity: 30-35, Reception Capacity: 50

A/V Set-Up Available? Please inquire for options

Custom menus available? Yes

F&B Minimum? Contact for details

Average Price Point (per person)?

Contact for details

Other Offerings? The BOATHOUSE also offers advanced group bookings of our vintage, and rare, Amphicars. Enter the water with a splash and enjoy the thrilling experience of a Captain-guided tour around Lake Buena Vista and Disney Springs.



CITY WORKS EATERY & POUR HOUSE

Discover the ultimate sports bar – this upbeat eatery features classic American fare and an incredible beer menu!

Established February 2020



OVERVIEW

Food & Beverage Capacity: 350 Guests
Bar Capacity: **Main Bar:** 250 guests, **Corner Patio Bar:** 60 guests, **Small Patio Bar:** 40 guests
Buyouts Allowed? Yes
Large Group Capacity: Groups of 15-350 guests
Private Dining Rooms Available: Semi-private space only for 15-350 guests
A/V Set-Up Available? Please inquire for options
Custom menus available? Yes
F&B Minimum? Yes, pricing varies based on dates, times and size of group

Average Lunch Price Point (per person)?
\$20, \$28 (with alcohol)
Average Dinner Price Point (per person)?
\$30, \$38 (with alcohol)
Other Offerings? City Works has 8,632 sq. ft. of indoor dining space and a spacious outdoor patio. City Works shows an array of events on 17 flatscreen HDTV's with state-of-the-art audio, including one enormous video wall



CHEF ART SMITH'S HOMECOMIN'

*Dig into delectable farm-to-fork cuisine showcasing Florida's fresh flavors -
all crafted from recipes by Chef Art Smith*

Established July 2016



OVERVIEW

Food & Beverage Capacity:

300 reception style, 175 seated

Bar Capacity:

28 seats (20 inside, 8 outside)

Buyouts Allowed? Yes, (Convention, Corporate, Wedding Rehearsals & Receptions, and Cocktail Events)

Large Group Capacity: 2 dining areas that can accommodate 35-45 Guests or full venue buyout for 150-300 Guests.

Private Dining Rooms Available: 2 semi-private rooms available. The Porch and The Springs Rooms - each can accommodate 70 reception style (35-45 seated.)

A/V Set-Up Available? Yes

Custom menus available? Yes

Average Lunch Price Point (per person)?

\$20, \$35 (with alcohol)

Average Dinner Price Point (per person)?

\$30, \$45 (with alcohol)

F&B Minimum? Yes, depending on dates and times

Other? Fresh, Florida farm sourced;

Handcrafted Moonshine & Resort Cocktails;

Southern Favorites: Chef Art's Famous Fried

Chicken, Shrimp & Grits, Shine Cake; Live

Entertainment Options; Indoor & Outdoor Event

Space; Customized events for 15-500 people &

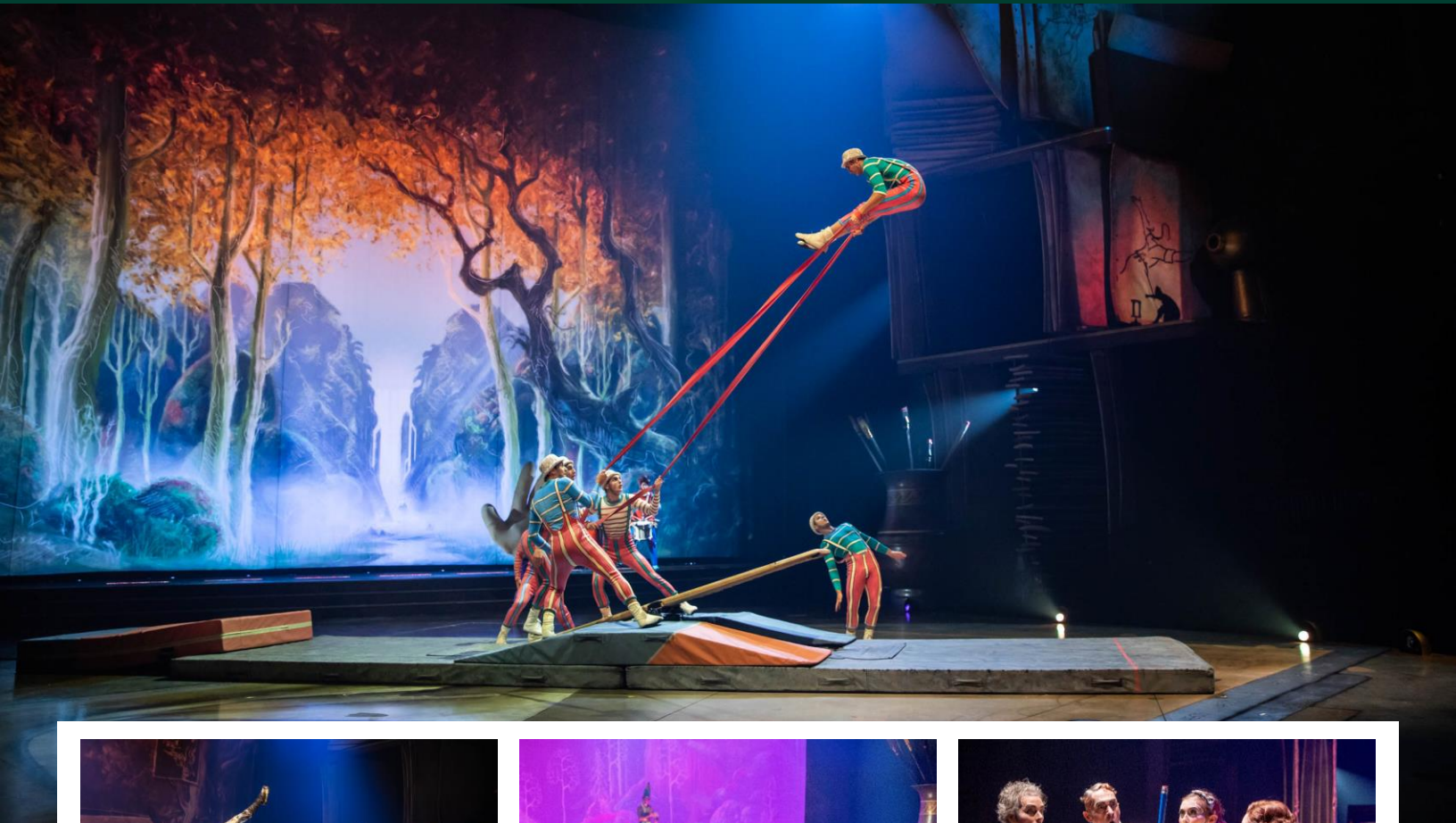
multiple concept buyouts for 500-2000 people.



DRAWN TO LIFE

Presented by Cirque du Soleil® and Disney

Set your imagination in motion with Drawn to Life—a love letter to the art of Disney Animation interpreted through the acrobatic mastery of Cirque du Soleil.



OVERVIEW

Theater Capacity: 1,580 Guests

Buyouts Allowed? Yes, up to 1,580 Guests

Regular Performance Times:

Wednesday – Saturday | 5:30pm & 8pm shows

Sunday | 1:30pm & 4pm shows

Dark on Monday and Tuesday

90 minute show – no intermission

Tickets: Start at \$80 per person

Custom experiences available? Yes.

Branding and customized preshow for theater buyouts

Other offerings? Meet & Greet with artists; “Behind the Stage” VIP tour enhancement



ENZO'S HIDEAWAY

Sip on prohibition-era cocktails and enjoy delicious bites at a tunnel bar exuding an intimate, 1920s speakeasy vibe.

Established January 2018



OVERVIEW

Food & Beverage Capacity:

200 Guests

Bar Capacity:

20-30 Guests

Buyouts Allowed? Yes

Large Group Capacity: Groups of 15-200 Guests **Private**

Dining Rooms Available: Only semi-private rooms available for up to 50 Guests

A/V Set-Up Available? Please inquire for options

Custom menus available? Yes

Average Lunch Price Point (per person)?
\$32++

Average Dinner Price Point (per person)?
\$55++

F&B Minimum? Yes, pricing varies depending on dates and times.

Other Offerings? Outside Lakeview Terrace



FRONTERA COCINA

Enjoy exciting flavors and a contemporary Mexican experience with your closest friends and family in a lively atmosphere headed up by seven-time winner of the James Beard Foundation Award, Chef Rick Bayless.

Established June 2016



OVERVIEW

Food & Beverage Capacity:

176 Guests (136 inside, 40 patio)

Bar Capacity:

22 Guests

Buyouts Allowed? Max 60 individuals per party.

Larger parties to be accepted in the near future.

Private Dining Rooms Available: No

A/V Set-Up Available? Yes

Custom menus available? Yes, but options are limited

Average Lunch and Price Point (per person)? \$23 - \$51

F&B Minimum? No



HOUSE OF BLUES

Enjoy this live music club serving up southern and global flavors for lunch, dinner and a soulful Sunday brunch.

Established September 1997



OVERVIEW

Food & Beverage Capacity:

2500 Guests

Bar Capacity:

175 Guests (25 in Restaurant & 150 in the Courtyard)

2100 Guests in the Music Hall

Buyouts Allowed? Yes

Large Group Capacity:

Entire venue can accommodate 2500 Guests

Private Dining Rooms Available: Main Dining Room

(150), Lightning Room (100), Lightning Room with

Curtain (40), Voodoo Room (120), Music Hall 1st Floor

(600)

A/V Set-Up Available? Yes

Custom menus available? Only for special events.

Average Lunch Price Point (per person)?

\$17, \$26 (with alcohol) Special event (\$24, \$50)

Average Dinner Price Point (per person)?

\$19, \$28 (with alcohol) Special event (\$40, \$65)

F&B Minimum? Yes, \$3,000-\$100,000+



JALEO BY JOSÉ ANDRÉS

Savor authentic Spanish tapas, paella and sangria in an inviting, vibrant atmosphere.

Established March 2019



OVERVIEW

Food & Beverage Capacity:

450 Guests

Bar Capacity:

40 Guests

Buyouts Allowed? Yes, both partial and full

Large Group Capacity: 550 Full Buyout/225 2nd floor buyout

Private Dining Rooms Available: Yes, 2nd floor buyout

A/V Set-Up Available? Yes

Custom menus available? Yes

Average Lunch Price Point (per person)? \$30++

Average Dinner Price Point (per person)? \$65++

F&B Minimum? Other Offerings? Please contact Sales Manager for additional details



MARIA & ENZO'S

Step into the golden age of air travel when you savor authentic Italian cuisine inside this stunning trattoria.

Established January 2018



OVERVIEW

Food & Beverage Capacity:

400 Guests

Bar Capacity:

No bar

Buyouts Allowed? Yes

Large Group Capacity: Groups of 15-500 Guests

Private Dining Rooms Available:

Only semi-private spaces offered for up to 50 guests.

Anything over 50 guests would be a Buyout of the restaurant.

A/V Set-Up Available? Please inquire for options

Custom menus available? Yes

Average Lunch Price Point (per person)?

\$28++

Average Dinner Price Point (per person)?

\$65++

F&B Minimum? Yes, pricing varies depending on dates and times.

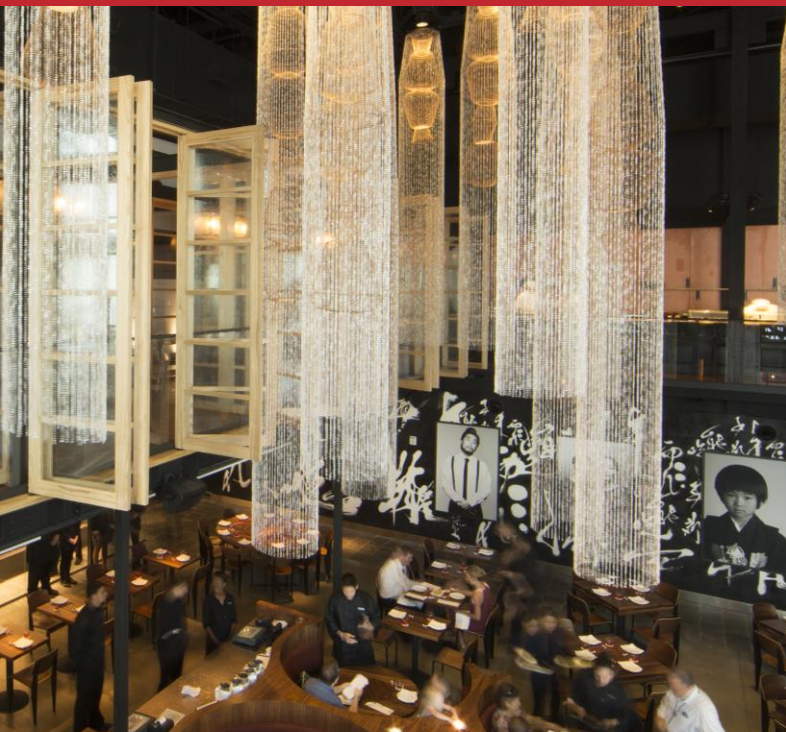
Other Offerings? Enzo's Bridge Patio and Promenade available along with Enzo's Tunnel seating



MORIMOTO ASIA

Experience the finest in Pan-Asian cuisine as Chef Morimoto of Iron Chef America unveils his most exciting restaurant yet.

Established September 2015



OVERVIEW

Food & Beverage Capacity:

500 Guests

Bar Capacity:

80 Guests (40 upstairs & 40 downstairs)

Buyouts Allowed? Yes

Large Group Capacity:

Groups of 15-500 Guests

Private Dining Rooms Available: 4 Private Dining Rooms can accommodate 6-8 guests each. Rooms can be combined to fit up to 36 Guests. Private dining dinner menus start at \$75 per person.

A/V Set-Up Available? Please inquire for options.

Custom menus available? Yes

Average Lunch Price Point (per person)?

\$32++

Average Dinner Price Point (per person)?

\$125++

F&B Minimum? Yes, pricing varies depending on dates and times.

Other Offerings? The Forbidden Lounge (2nd floor) features a private entrance, The Forbidden Lounge, Sushi Bar, semi-private interior Promenade Dining area and exterior Promenade Patio. Can be used together or individually for groups of 15-150 Guests.



PARADISO 37

Take a culinary tour of North, Central and South America at this waterfront spot at Disney Springs.

Established June 2009



OVERVIEW

Food & Beverage Capacity: 409 Guests

Bar Capacity: 50 Guests

Buyouts Allowed? Yes

Large Group Capacity:

Second floor can accommodate up to 100-150 guests (including outdoor)

Private Dining Rooms Available: No

A/V Set-Up Available? Yes

Custom menus available? Yes

Average Lunch Price Point

(per person)? \$32, \$40 (with alcohol)

Average Dinner Price Point

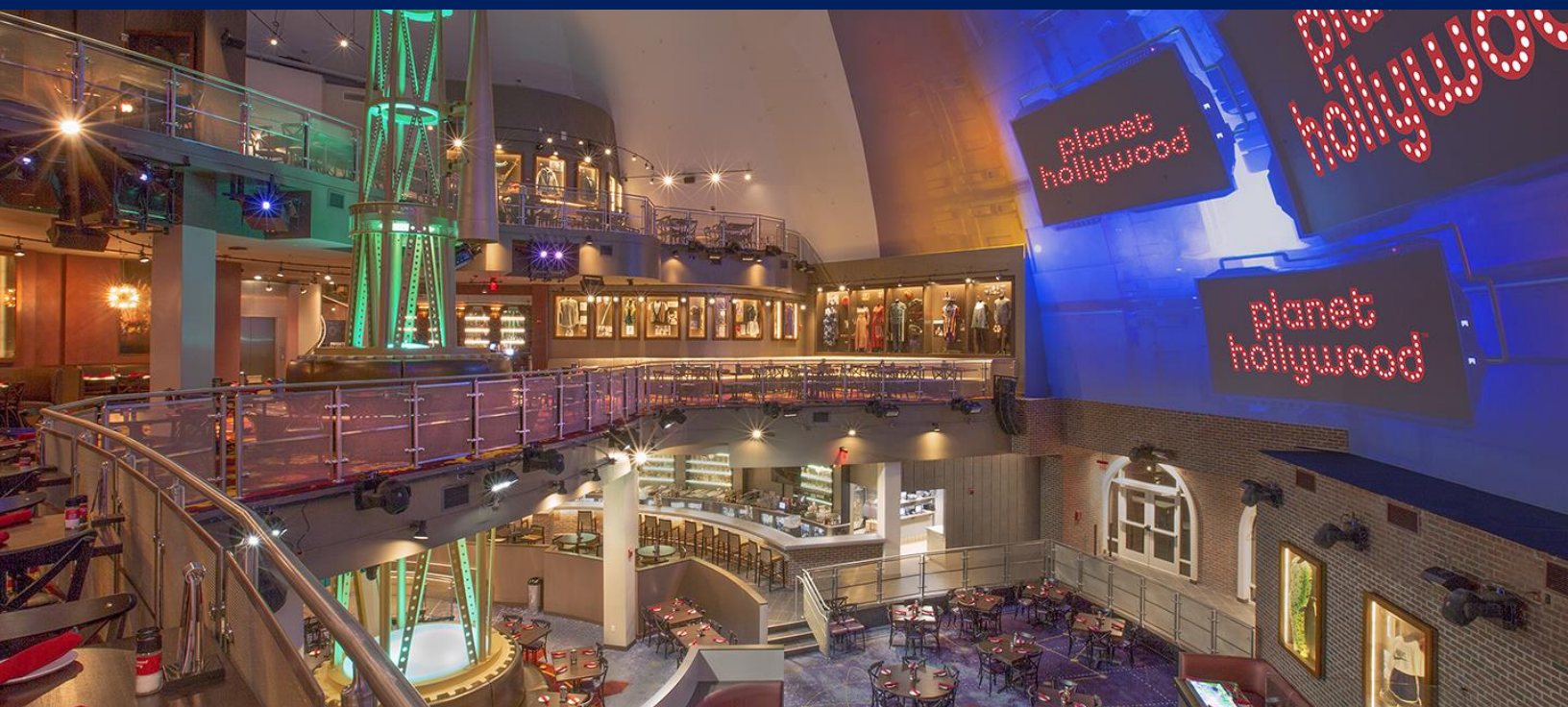
(per person)? \$40, \$48 (with alcohol)

F&B Minimum? No

PLANET HOLLYWOOD

Enter a realm where innovative cuisine, live entertainment and rare Hollywood memorabilia create a dazzling scene.

Established January 2017



OVERVIEW

Food & Beverage Capacity:

870 Guests (Terra: 240, The Terrace: 150, Lunar: 200, Galaxy: 130, Stargazers Bar: 150)

Bar Capacity:

255 Guests (Terra: 75, Lunar: 30, Stargazers Bar: 150)

Buyouts Allowed? Yes, up to 1,100 Guests

Large Group Capacity:

Stargazers Bar: up to 150 Guests

Terra and The Terrace: up to 500 Guests **The Terrace:** up to 250 Guests

Lunar: up to 250 Guests,

Galaxy: up to 200 Guests

Private Dining Rooms Available: Exclusive VIP floor buyouts available for all levels and space

A/V Set-Up Available? Yes, includes tech support

Custom menus available? Yes

Average Lunch Price Point (per person)?

\$25, \$35 (with alcohol)

Average Dinner Price Point (per person)?

\$45, \$75 (with alcohol)

F&B Minimum? Not required for semi-private events

Other offerings? Live nightly DJ/VJ; Stargazers

Bar offers nightly live entertainment and an

eclectic collection of Florida craft brews



PADDLEFISH

Celebrate the freshest seafood while featuring steaks and chops for an elevated meal by land and sea.

Established February 2017



OVERVIEW

Food & Beverage Capacity:

525 indoor, 234 on outdoor deck

Bar Capacity:

59 indoor, 65 on outdoor deck

Buyouts Allowed? Yes

Large Group Capacity:

Banquet seating for up to 525 guests, and up to 1,000
Guests reception style.

Private Dining Rooms Available:

First Deck - The Boil seats 50 inside & 65 outside for reception only. The Paddlewheel Room seats 100. **Second Deck** - The Constellation Room seats 90, The Market Room seats 98. **Third Deck** - The Bow seats 70. The Lounge seats 30. Full deck up to 200 guests reception-style.

A/V Set-Up Available? Offered for private restaurant events. Can be contracted with a rental fee.

Custom menus available? Yes

Average Lunch Price Point (per person)?
\$25-\$40

Average Dinner Price Point (per person)?
\$55-\$125

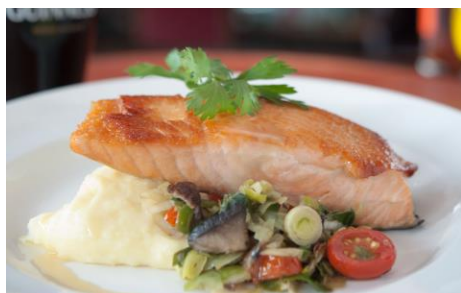
F&B Minimum? Varies based on season



RAGLAN ROAD IRISH PUB & RESTAURANT

Step inside this authentic Irish pub and indulge your tastes in hearty meals, cold pints and nightly entertainment

Established October 2005



OVERVIEW

Food & Beverage Capacity:

719 Guests

Bar Capacity:

60 Guests

Buyouts Allowed? Yes

Large Group Capacity:

Accommodates groups of 20-700 with 4 bars and interior and exterior seating.

Private Dining Rooms Available:

The Raglan Room - 75 Guests, The Music Room- 55 Guests.

Semi-private spaces include:

The High Falutin' Snug - 23 Guests, The Library Bar - 30 Guests, The Tonsil Tickler Patio - 150-200 Guests.

A/V Set-Up Available? Yes

Custom menus available? Yes

Average Lunch Price Point (per person)?

\$22, \$25 (with alcohol)

Average Dinner Price Point (per person)?

\$35, \$38 (with alcohol)

F&B Minimum? Yes, pricing varies depending on dates and times.



RAINFOREST CAFE

Traipse the jungle and tantalize your taste buds with flavorful American favorites and kid-friendly cuisine.

Established August 1996



OVERVIEW

Food & Beverage Capacity:

725 Guests

Bar Capacity:

Mushroom Bar - 99 Guests,

Lava Lounge - 125 Guests

Buyouts Allowed? Yes

Large Group Capacity:

1,200 Guests

Private Dining Rooms Available: No

A/V Set-Up Available? No

Custom menus available? Yes

Average Lunch Price Point (per person)?

\$25, \$30 (with alcohol)

Average Dinner Price Point (per person)? \$31, \$36 (with alcohol)

F&B Minimum? Yes, pricing varies depending on dates and times.

Other Offerings? There are interactive animatronics and various themes from the distinct dining rooms.

SPLITSVILLE LUXURY LANES

Roll in and rock out with the entire family for exciting food, upscale fun and classic entertainment

Established December 2013



OVERVIEW

Food & Beverage Capacity:

1600 Guests

Bar Capacity:

Main Bar (1st floor): 50 Guests, Patio Bar (1st floor): 90 Guests, Balcony Bar (2nd floor): 115 Guests, Main Bar (2nd floor): 60 Guests, Billiard Bar: 30 Guests

Private Dining Rooms Available: No

Large Group Capacity: Partial & Full Buyouts Available.

Private and Semi-Private Spaces Available for Convention, Team-Building, Cocktail Events and more. Inquire for more details.

Average Lunch Price Point (per person)?

\$13, \$25 (with alcohol)

Average Dinner Price Point (per person)?

\$20, \$35 (with alcohol)

Buyouts Allowed? Yes

Custom menus available? Yes

A/V Set-Up Available? Yes

F&B Minimum? Yes, pricing varies. Inquire for more details.

Other offerings? Fresh-Rolled Sushi; Hand-Tossed Pizzas; Gourmet Sliders; Custom Menu & Entertainment Options; A/V Accessibility



STK ORLANDO

Retreat to this chic hideaway for an ultra-modern steakhouse experience – Featuring an innovative menu, in-house DJ and a stunning outdoor patio.

Established May 2016



OVERVIEW

Food & Beverage Capacity: 700 Guests (472 seated)

Bar Capacity: 38 Guests (28 Main Bar, seated & 10 Rooftop Bar, seated)

Buyouts Allowed? Yes

Large Group Capacity: Parties of 11 and up – please inquire for options and availability

Private Dining Rooms Available: Main Dining Room: up to 170 seated. Tempest Storm: up to 18 seated. Rooftop Main Dining: up to 80 seated. The Terrace: up to 80 seated. The Fire Pit: up to 28 reception. The Balcony: up to 20 seated. The Patio: up to 40 seated.

A/V Set-Up Available? Yes

Custom menus available? Yes

Average Lunch Price Point (per person)? \$45-\$65 (without alcohol)

Average Dinner Price Point (per person)? \$85-\$165 (without alcohol)

F&B Minimum? Yes, pricing varies depending on dates, times, and amount of people



SUMMER HOUSE ON THE LAKE

Summer House on the Lake brings the sunshine all year round.

Established December 2023



OVERVIEW

Food & Beverage Capacity: 500 for seated and 800 for reception-style events

Bar Capacity: 3 Bars available throughout the restaurant with roughly 16-20 seats each

Buyouts Allowed? Yes, inquire for details

Large Group Capacity: Lakeside: Up to 300 guests, The Sun Room: Up to 200 guests, The Porch: up to 100 guests

Private Dining Rooms Available: The Porch, up to 100 guests

A/V Set-Up Available? Yes

Custom menus available? Yes

Average Lunch Price Point (per person)? Starting at \$50

Average Dinner Price Point (per person)? Starting at \$50

F&B Minimum? Varies depending on the space selected and the day of the week

Other Offerings: We offer an off-site catering menu that includes lunch combo options, large platters or stations, pizzas, and sweet treats.



TERRALINA CRAFTED ITALIAN

Delight in a dining experience with sweeping waterfront views and authentic Italian home cooking.

Established June 2018



OVERVIEW

Food & Beverage Capacity:

300 Guests inside, 200 outside

Bar Capacity:

50 indoor, 75 outdoor Veranda Bar

Buyouts Allowed? Yes, inquire for details

Large Group Capacity: 225 seated, 500 reception-style

Group Dining Rooms Available: **The Wine Room:** 24 seated, **The Conservatory:** 24 seated, **The Great Room:** 46 seated (combined with The Wine and Conservatory for 100 seated or 125 reception-style) **The Alcove:** 24 seated, **The Courtyard Dining:** 60 seated, **The Lakeside Terrace:** 40 seated, **The Lakeside Patio:** 24 seated

A/V Set-Up Available? For full buyouts only

Custom menus available? Yes

Average Lunch Price Point (per person)? \$20-\$40

Average Dinner Price Point (per person)? \$45-\$75

F&B Minimum? Yes, varies on event details



THE EDISON

Swig by this lavish, industrial gothic-style hotspot for classic American cuisine, craft cocktails and unique entertainment

Established January 2018



OVERVIEW

Food & Beverage Capacity:

450 Guests

Bar Capacity:

60 Guests: **Breaker Bar**, 20 Guests: **Patent Bar**, and 50 Guests: **Boiler Bar**

Buyouts Allowed? Yes

Large Group Capacity: Groups of 15-450 Guests

Private Dining Rooms Available: Semi-private spaces offered for various group sizes. Buyout of the 2nd level only available.

A/V Set-Up Available? Please inquire for options

Custom menus available? Yes

Average Lunch Price Point (per person)? \$29++

Average Dinner Price Point (per person)? \$80++

F&B Minimum? Yes, pricing varies depending on dates and times.

Other Offerings? Promenade and lakeside patios available



T-REX

From salads to steaks, tear into tasty tectonic plates that every creature in your family will enjoy

Established October 2008



OVERVIEW

Food & Beverage Capacity:

630 Guests

Bar Capacity:

Octopus Bar - 80 Guests

Buyouts Allowed? Yes

Large Group Capacity:

1,000 Guests

Private Dining Rooms Available: No

A/V Set-Up Available? No

Custom menus available? Only for special events.

Average Lunch Price Point (per person)?

\$22, \$28 (with alcohol)

Average Dinner Price Point (per person)?

\$30, \$38 (with alcohol)

F&B Minimum? Yes, pricing varies depending on dates and times.

Other Offerings? There are interactive animatronics and various themes from the distinct dining rooms. Interior Ice Cave with dynamic lights can accommodate up to 100 Guests.



WINE BAR GEORGE

Experience masterfully paired wine and food led by Master Sommelier George Miliotes

Established May 2018



OVERVIEW

Food & Beverage Capacity:

200 Guests

Bar:

150 seats (second floor)

Buyouts Allowed? Yes

Large Group Capacity: 6-200 Guests

Private Dining Rooms Available: 7 private dining areas that can accommodate 2-200 guests. Rooms can be combined as well for additional capacity.

A/V Set-Up Available? Yes

Custom menus available? Yes

F&B Minimum? Yes, depending on dates and times.

Other? With custom event planning from start to finish, events at Wine Bar George are tailored to each individual need. Reception and seated events are entertaining and engaging with Master Sommelier and Certified Sommelier led wine tastings and pairings. As one of fewer than 250 Master Sommeliers in the world, George Miliotes' expertise and enthusiasm for wine and food paired together brings a new and fun element to both professional and social events.



WOLFGANG PUCK BAR & GRILL

From our garden to your table. Make memories that last a lifetime.

Established November 2018



OVERVIEW

Food & Beverage Capacity: 250 Guests (dinner)

450 Guests (cocktail reception)

Bar Capacity: 35 Guests

Buyouts Allowed? Yes

Large Group Capacity: Main dining room inside sits 120 Guests, 220 reception. Semi private dining room sits 60 Guests, 75 reception.

Outdoor patio sits 36 Guests, 50 reception.

Chef's Table sits 18 Guests.

Private Dining Rooms Available: No

A/V Set-Up Available? Yes

Custom menus available? Yes

Average Lunch Price Point (per person)? \$25, \$35 (with alcohol)

Average Dinner Price Point (per person)? \$45, \$75 (with alcohol)

F&B Minimum? Yes, pricing varies depending on dates and times.

Other Offerings? Wolfgang Puck Signature Wines, Wolfgang Puck Signed Cook Books, Gelato Bar

